



Food, Beverage & Dairy Projects
Flexachem support



Summary

- Privately owned Cork based company founded in 1982
- The company portfolio delivers expertise for our customers across all business sectors
- Product focus of **Safety** through **Reliability** of performance – Giving our customers improved Uptime
- Focussed portfolio support via dedicated teams in Process Equipment, Valves, Pumps & Mechanical Seals

- Chemical
- Pharmaceutical
- Biotechnology
- General Process Industries
- Refinery plants
- Energy generation
- Paint
- Cosmetics
- Food and Beverage
- Meat Processing
- Water & Waste Water treatment
- Steam & Utility Applications
- Contractors & Process Skid Builders





Partnership approach
with our clients to
deliver engineered
solutions to meet
your application &
performance needs –
from component to
project turnkey

General summary

Process

- Production solutions
- Product blending & CIP Skids
- Tank cleaning
- Heat Transfer -Heat exchangers
- Tank Agitators
- Tank breathing & Safety
- Pipeline components
- Waste treatment

Valves

- Divert
- Mix proof
- Isolation
- Control
- Block + Bleed

Pumps

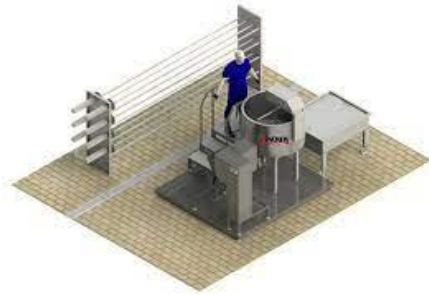
- Centrifugal
- Vacuum
- Positive displacement
- Helicoidal

Seals

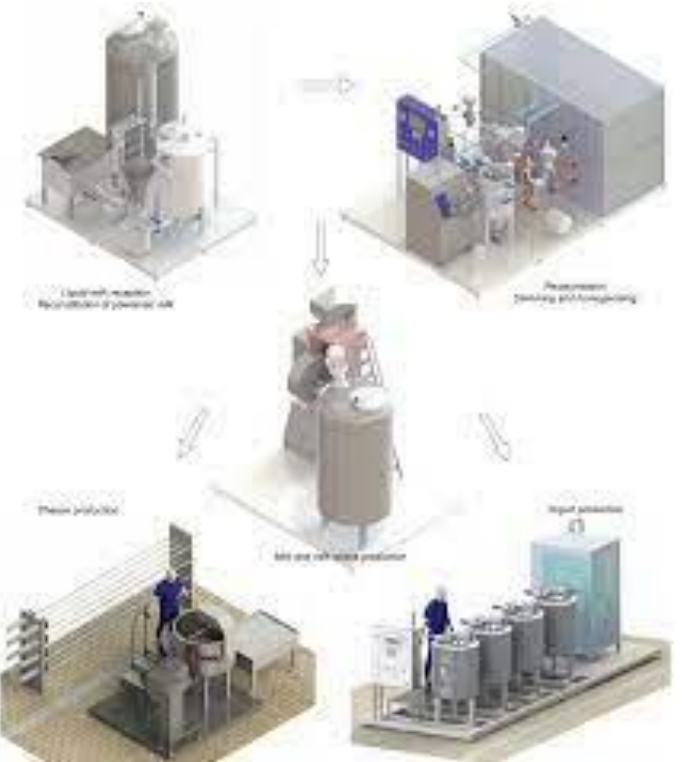
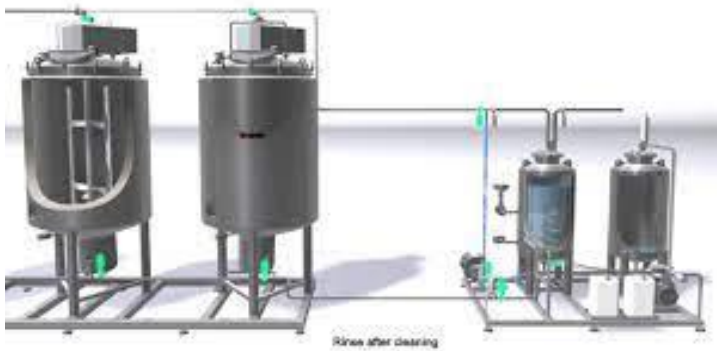
- Agitator seals
- Pump seals

Production solutions – For all these applications

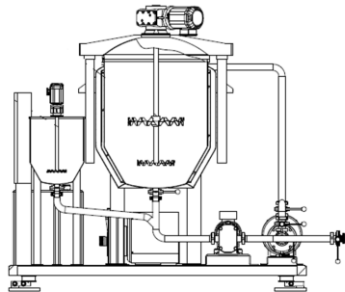
Dairy, Sauces, Yoghurt, Creams, Pasteurisation...



Production solutions



Sample skids with high shear

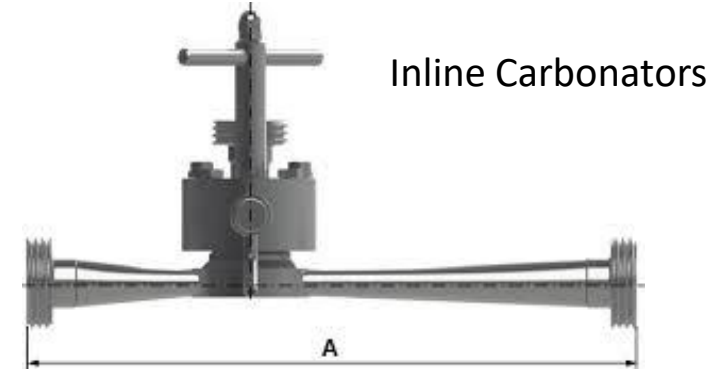


Production solutions –

Pressure venting, Carbonation for brewing & Degassing, Pigging systems



Pigging systems

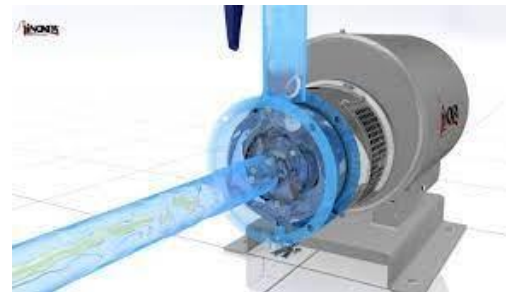


Degassing skid

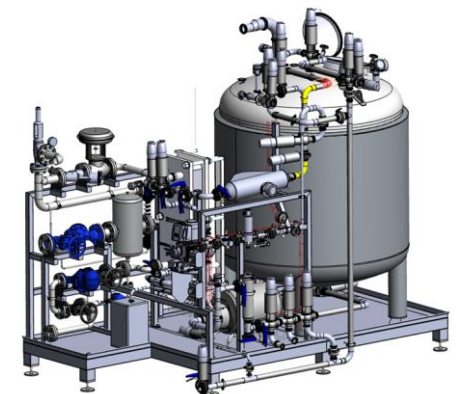


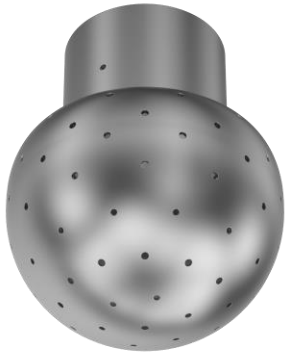
Pressure relief

Product Blending – Liquid and powder addition, homogenisation..etc



CIP Skids – Mobile, semi + fully automated





Class 1 –
Static spray ball
Range up to 5.2 metres



Class 2
Rotating spray ball
Range up to 2.6 metres



Class 3
Rotating spray ball
Range up to 3.0 metres



Class 4
Rotating spray ball
Range up to 9.5 metres



Class 5
Rotating spray ball
Range up to 24.0 metres

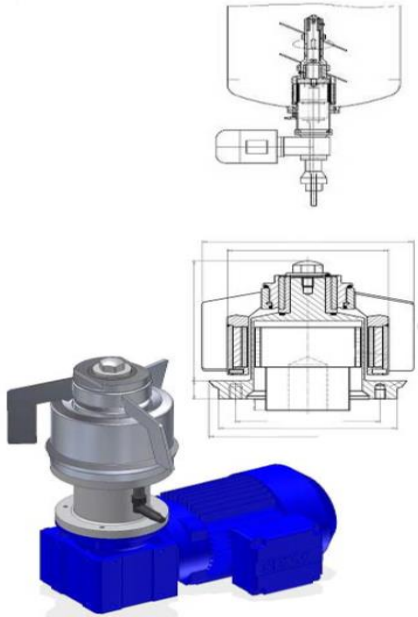
Tank Cleaning

Product Heat Exchangers



Kelvion





Magnetic drive agitators



Side entry agitators



Top entry agitators

Tank Agitators – Top, Side or Bottom entry

From small vessel to larger silo, we cover all tank mixing applications

Flame Arrester



Venting



Bursting discs



Vapour control



Filters + Strainers



Tank Level Gauges

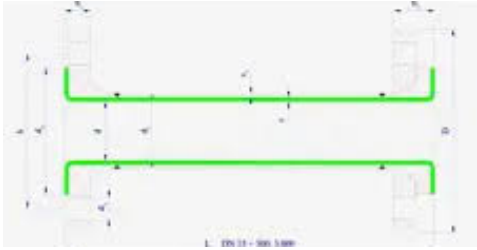


Sight glasses



Expansion Bellows

Pipeline & Tank components

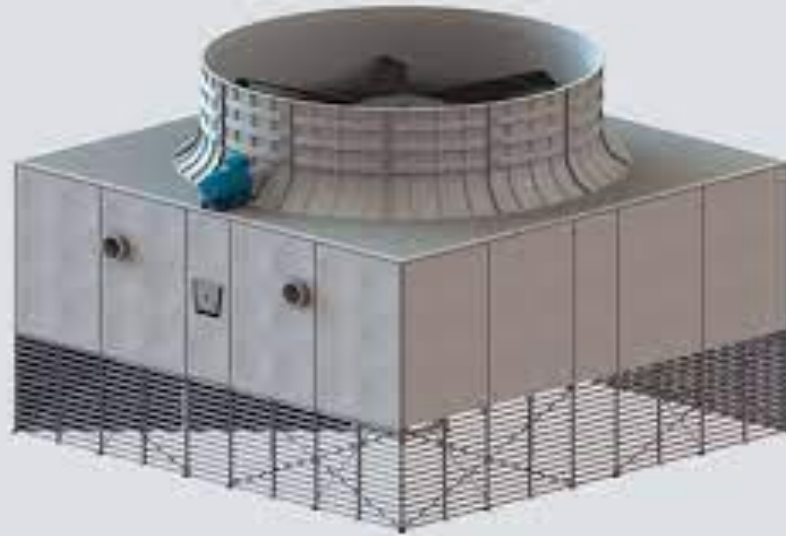


Corrosion resistant pipework

Utilities - Heat Exchangers & Cooling Towers



Shell & Tube



Cooling Towers



Plate + Frame

Kelvion





Water Treatment

Tank agitators, static mixers, valves, pumps, submersible pumps, submersible agitators, surface & immersed aeration + diffusers

Product Valves



FLOWSERVE®

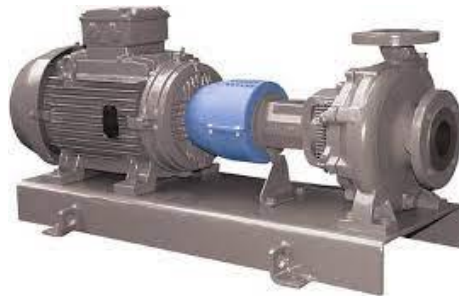






Vacuum + Centrifugal pumps for utilities & chemicals

- Durco Mark3 Process pumps
- Innomag Magnetic drive Sealless pumps
- SIHI Vacuum pumps
- Seal pots
- Commissioning & Alignment





FLOWSERVE



Mechanical Seals

Project Flow

Basic Process Flow Diagram

- Define basic volumes, flow rates and pipeline sizes end to end

Detailed Process Flow Diagram

- Evolved specification and URS development
Mechanical specifications

Overlay P&ID

- Inclusion of instrumentation, control and automation

Specification for enquiry

- Bill of materials listing
- Partnership commentary and submission of costs
- PO discussion

Equipment schedule

- Delivery
- Install
- Close out

Technical Comment

We encourage discussion on options to maximise efficiency & optimise the budget

ATEX discussions will have a bearing on solutions offered

Lead times options will also be tabled

Site commissioning and sign off protocol to be agreed per product type in advance of purchase

Service engineers subject to our partners rate of site costs

Lead times

- Depends on the capital equipment type
- Longer lead items are typically production skids and CIP skids however, most items fall into the 6-16 weeks bracket for delivery once specifications are known & confirmed with the factory
- Lead times are dependent on specifications agreed for the duties, factory loading, materials availability, payment stages and client approval for any drawings relevant for manufacture



Finance

- Once overall budget is worked out this can be discussed
- A value package will also be available for multiple equipment spend
- Typically for CAPEX spend, stage payments will be involved
- Formal Purchase Order required for ISO audit purposes



Project Support



Process

- Michael Bradley

Michael.Bradley@flexachem.com

Mobile +353 86 0476178



Pumps

— Phil Soltan

Phil.soltan@flexachem.com

Mobile +353 86 1853782



Valves

– Brendan
Merrigan

Brendan.merrigan@flexachem.com

Mobile +353 87 2598124